



Chamberlain House, Armstrong Drive, Worcester, WR1 2GB

£225,000

🛏 2 🍳 2 🚿 1



Summary:

An immaculate and very spacious two double bedroom ground floor apartment overlooking the Canal. With two allocated and undercover parking spaces! This generous apartment has open plan living, creating a light and airy space. The property is 8 years old, build by Berkley Home and has Approx. 2 years left on the NHBC. The property in brief comprises; entrance hall, open plan living/dining/kitchen, two double bedrooms, en-suite and bathroom. The property benefits from underfloor heating heating and double glazing. Viewing is recommended to appreciate the size and location.

Description:

Access is gained via communal entrance to your own door. Entry into the hallway with two storage cupboards. The living area is all open plan creating a light and airy space. The view out the window overlooks the canal. The kitchen area offers base and eye level gloss units with tiled splash back. Integrated appliances to include, oven hob, microwave, fridge/freezer and washing machine. Two bedrooms with the main benefiting from fitted wardrobes, views and en-suite shower room. The second bedroom has fitted wardrobes. The family bathroom offers a three piece white suite with half tiled walls and heated towel rail. The property benefits from heating, double glazing, allocated parking and views.

Outside:

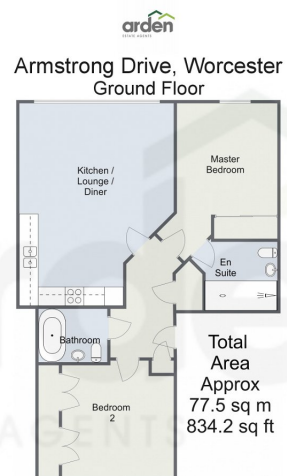
Allocated parking space and communal bin store.

Location:

Situated in the popular Diglis area of Worcester it benefits from having playing fields, gym, a hotel and pub. This is an attractive location due to its close proximity to the city centre which offers wine bars, restaurants and shopping. Foregate Street Station is in the city if you need to commute and you are also perfectly positioned for canal and river walks.

Agent Note:

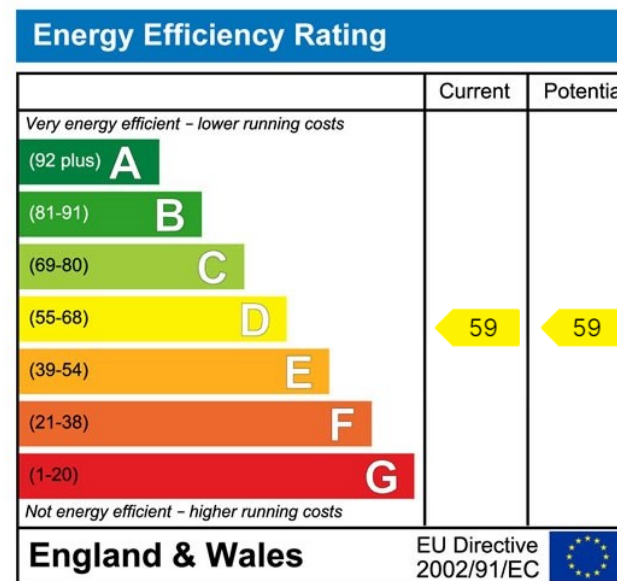




arden
ESTATE AGENTS

For illustrative purposes only. Decorative finishes, fixtures & fittings do not represent the current state of the property. Measurements are approximate & not to scale. Floor Plans made using RoomSketcher.

- Ground Floor Apartment
- Views Over the Canal
- Open Plan Living Area
- Two Undercover Parking Spaces
- Two Double Bedrooms, En-Suite and Bathroom
- Diglis Location



For more information on this house or to arrange a viewing please call the office on:

01905 958 290

Alternatively, you can scan the QR to view all of the details of this property online.



arden
ESTATE AGENTS